



1

**In Montgomery County (and most places) today, any new property development must include off-street parking, based on a range of parking standards.**



2

2

The most common form of parking standards are minimum parking requirements (or parking minimums)— and they apply to just about every type of property.



3

3

The most common form of parking standards are minimum parking requirements (or parking minimums)— and they apply to just about every type of property.

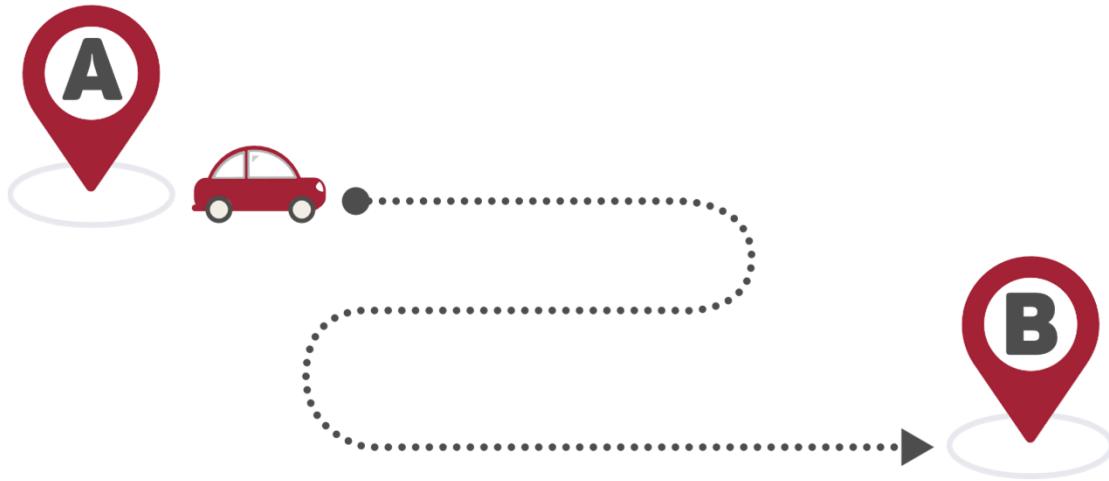


Their purpose is to **oversupply** parking so that there are always empty parking spaces available.

4

4

**Parking minimums seek to oversupply parking, even assuming that cars are the only way people travel from Point A to Point B.**



5

5

**This is a feedback loop:  
It shapes our communities around parking,  
which makes us more dependent on driving,  
which necessitates more parking ...**



6

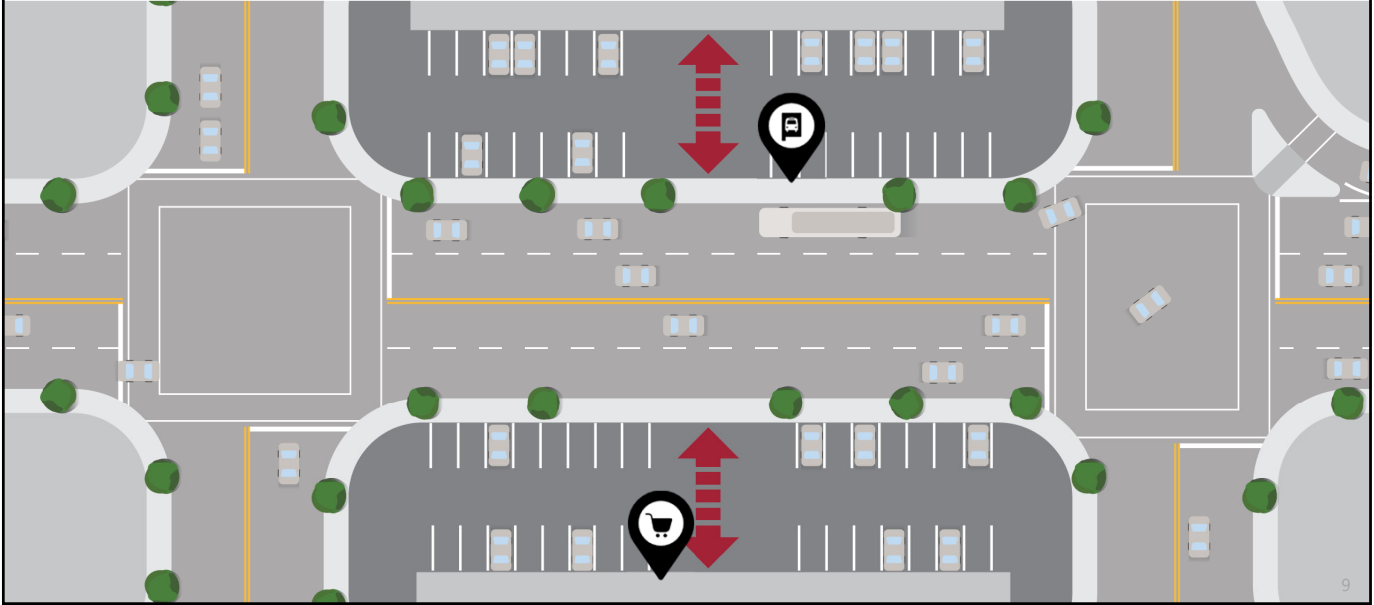


7



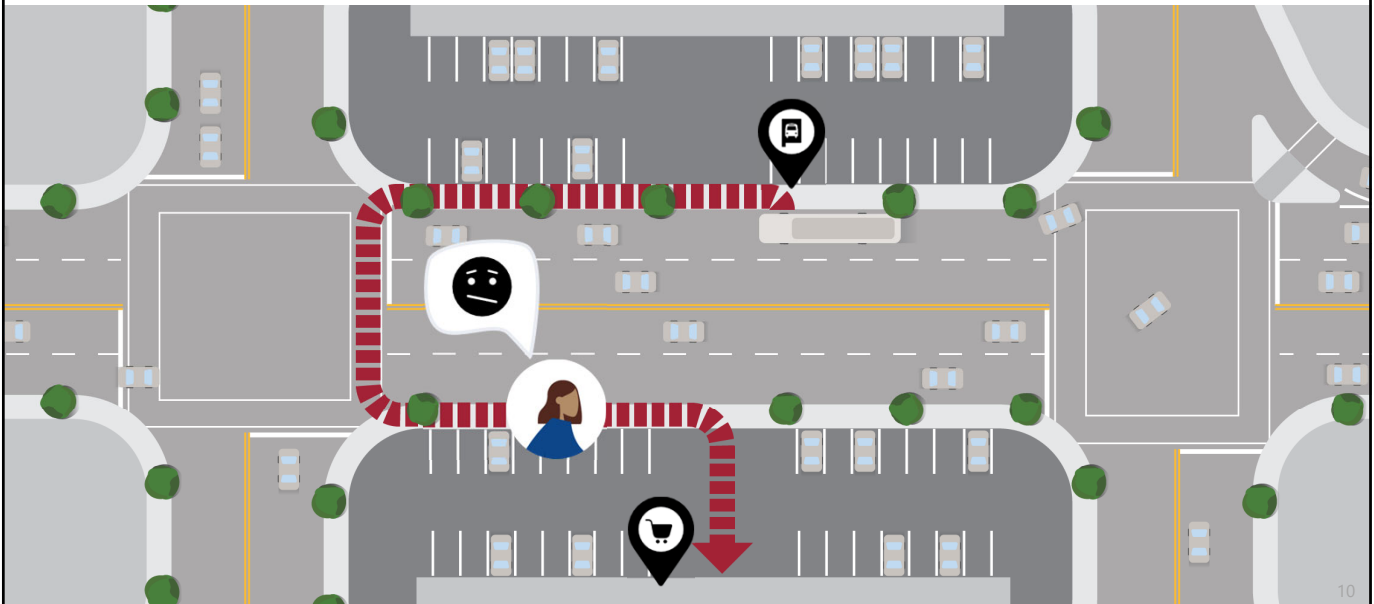
8

**Plus, too much parking pushes destinations farther apart.**



9

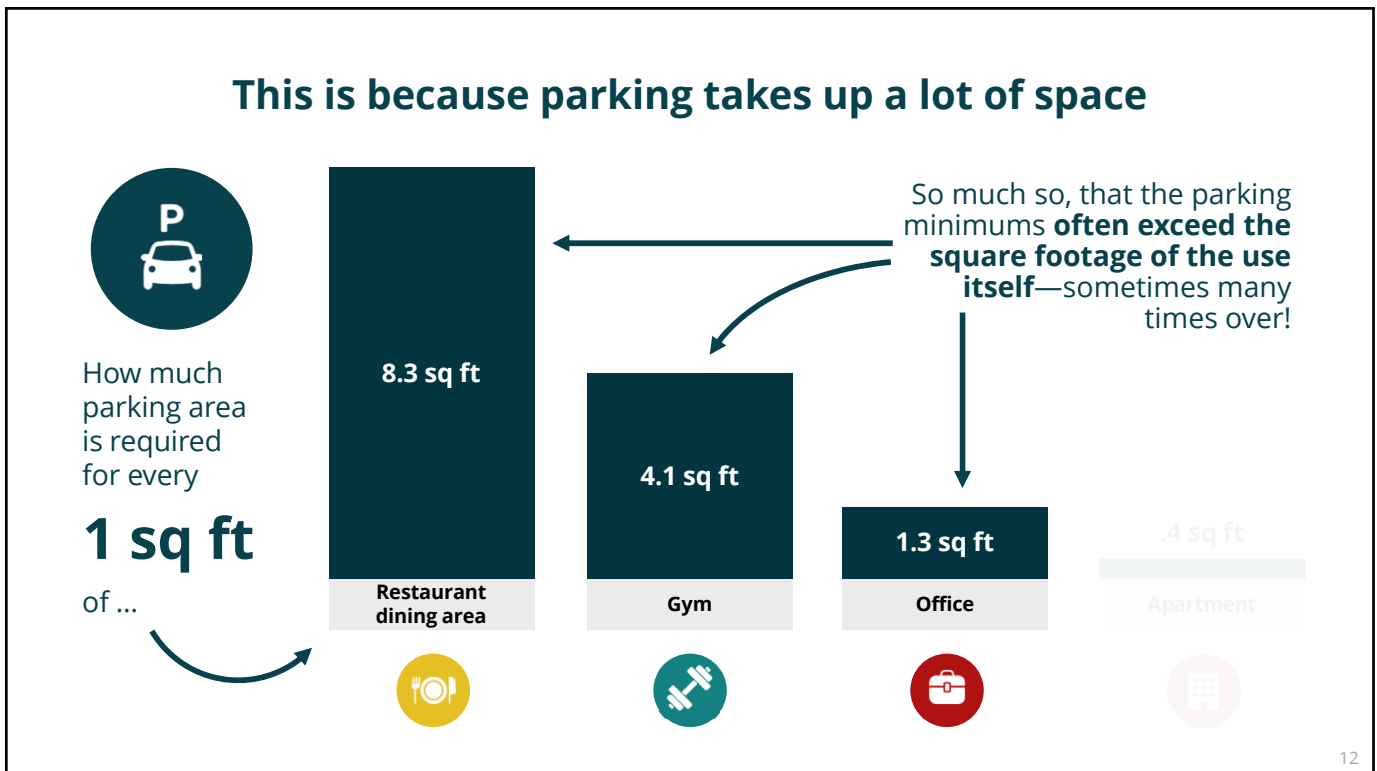
**For people like Raquel who choose not to drive, this makes walking and transit less safe and less pleasant.**



10

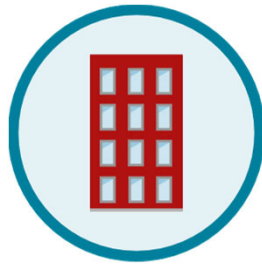


11



12

**Our land area is fixed, so space for parking  
is space that's *not* used for something else**



Like housing, jobs, stores, restaurants, or green space

13

13

**At the end of the day, regulations tell  
us a lot about our values and priorities**

**Today, empty housing for cars takes  
precedence over housing for people**

14

## So, why is this a problem?

1

Housing  
Affordability

2

Business  
Flexibility

3

Economic  
Development

4

Transportation  
Options and  
Climate Change

15

## To help explain, let's introduce five characters



Renter  
Renee



Homeowner  
Harriet



Shopkeeper  
Shauna



Developer  
Danielle



Planner  
Pamela

16



# Parking minimums make housing expensive

17

## All this parking is expensive to build



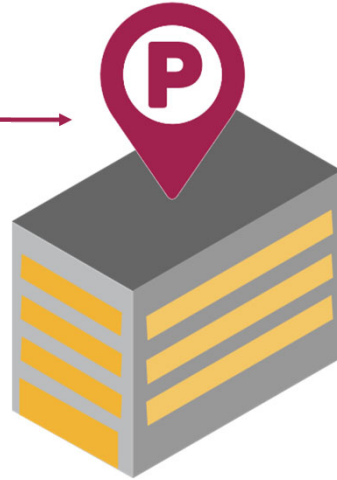
**\$5,000**  
initial cost per space  
for **surface parking**

18

## All this parking is expensive to build

**\$25,000-\$50,000**

initial cost per space for  
**structured parking**



19

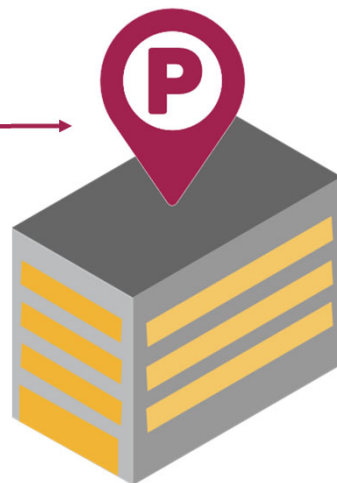
## All this parking is expensive to build

**\$25,000-\$50,000**

initial cost per space for  
**structured parking**

**\$\$\$**

This becomes an added cost for  
the property: monthly operations,  
maintenance, and debt-service—which  
is passed on to residents and tenants



20

## A parking space adds \$142 per month to rent, on average



21



### But many people don't need car parking, including Renter Renee

People who choose not to drive, young people, older people, people with lower incomes, people with low vision, the list goes on



22

## There are even parking minimums for housing designed for lower income households



One-third of families that need and would qualify for housing affordable at 30% of the Area Median Income (AMI) **do not own a car**



23

## Without parking minimums, Developer Danielle could build more homes, more affordably priced, with less parking

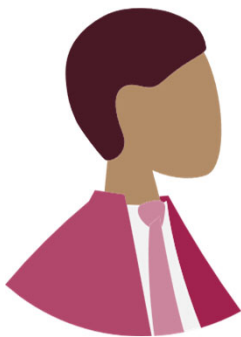


24

**Renter Renee would have more affordable housing options that better suit her budget and car-free lifestyle**



25



**And for subsidized housing, Planner Pamela wouldn't have to spend public money to build parking for people who don't need it**

26

## Why else are parking minimums a problem?

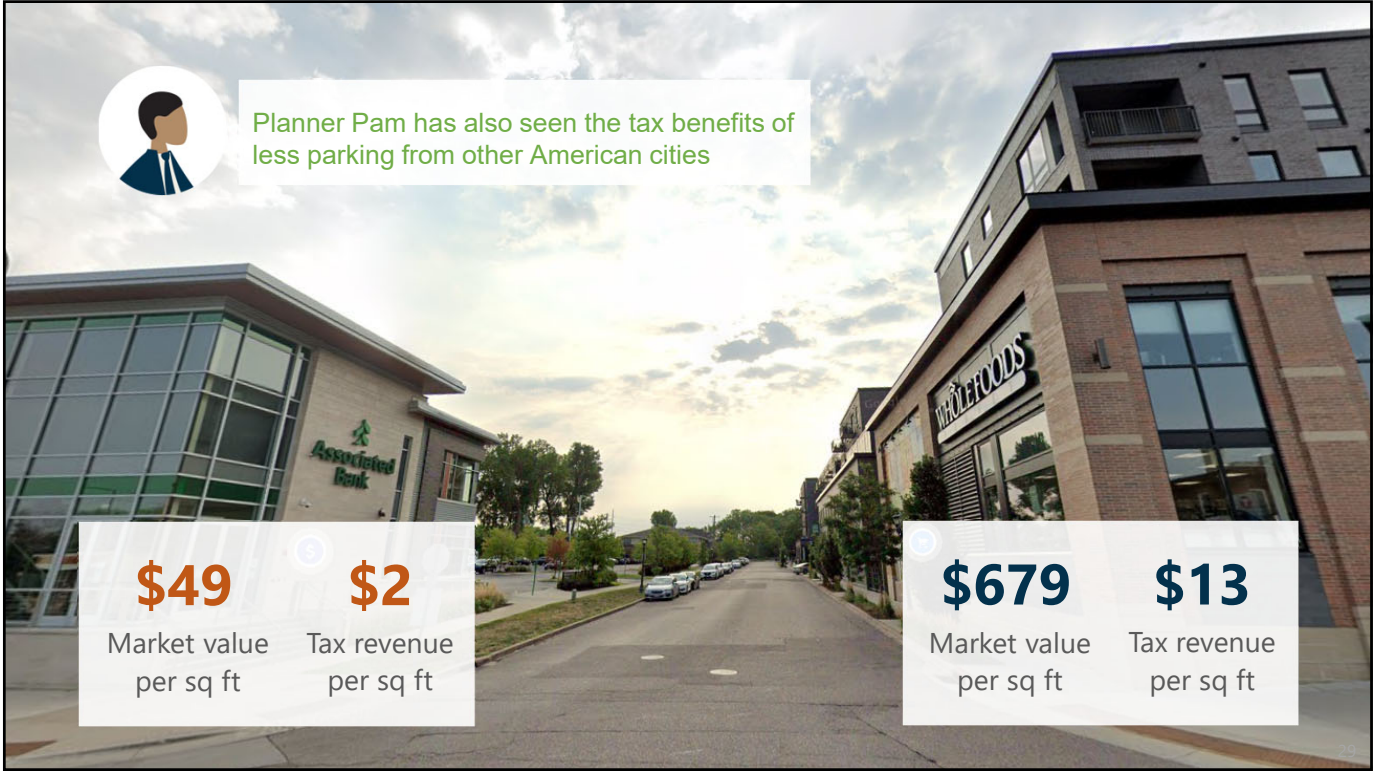
- 1  
Housing  
Affordability
- 2  
Business  
Flexibility
- 3  
Economic  
Development
- 4  
Transportation  
Options and  
Climate Change

27

## Why else are parking minimums a problem?

- 1  
Housing  
Affordability
- 2  
Business  
Flexibility
- 3  
Economic  
Development
- 4  
Transportation  
Options and  
Climate Change

28



29

## Why else are parking minimums a problem?

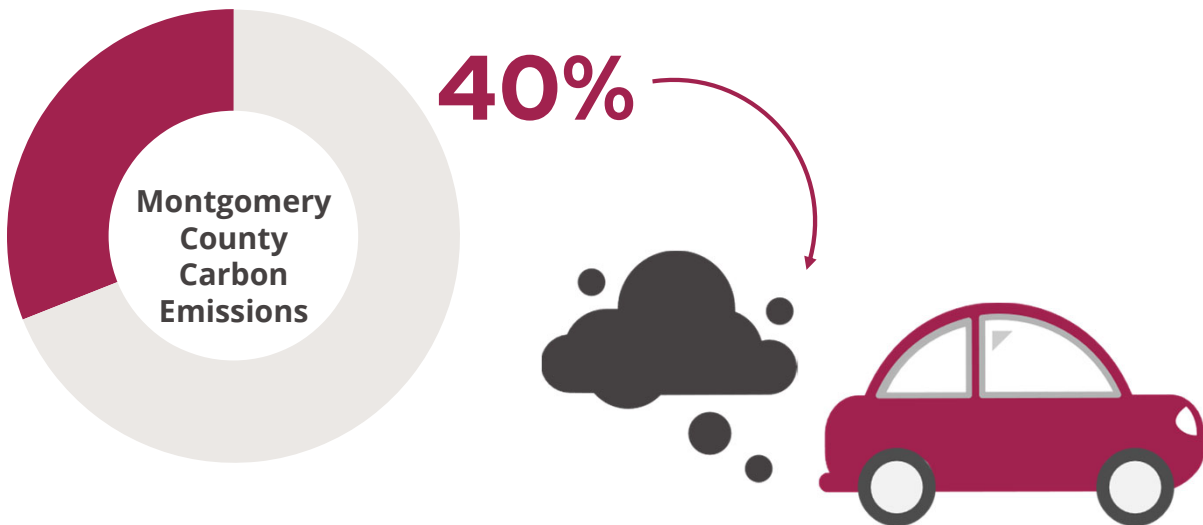
- 1 Housing Affordability
- 2 Business Flexibility
- 3 Economic Development
- 4 Transportation Options and Climate Change

30

**Zooming out, we are facing a climate crisis,  
and Montgomery County is aiming  
to eliminate GHG by 2035**

31

**40% of Montgomery County's carbon emissions  
come from vehicle travel**



32



Nearly one-third (31%) of Saint Paul's carbon emissions come from vehicle travel

31%

But wait, how does this relate to parking minimums?

Saint Paul Carbon Emissions

33

**When there's a lot of parking, people have an added incentive to drive ...**

Homeowner Harriet

**... even if they'd be happy taking lower emissions options, like walking, biking, and transit**

34



35

**Without parking minimums, we can reduce the incentive to drive, make alternatives to driving more appealing ...**

**... and reach our climate goal faster**

36

## Why are parking minimums a problem?

1      2      **Let's recap**      3      4

1

Housing  
Affordability

2

Business  
Flexibility

3

Economic  
Development

4

Transportation  
Options and  
Climate Change

37

### Reducing or eliminating parking minimums would help

	 Renter Renee	 Homeowner Harriet	 Shopkeeper Shauna	 Developer Danielle	 Planner Pamela
<b>1</b> Increase housing affordability and reduce construction costs					
<b>2</b> Give new flexibility to small business owners who want to use their off-street parking for other uses					
<b>3</b> Support economic growth					
<b>4</b> Reduce our emissions and make walking, biking, and transit more appealing					

38

**Thank you!**

Chris Forinash  
cforinash@nelsonnygaard.com